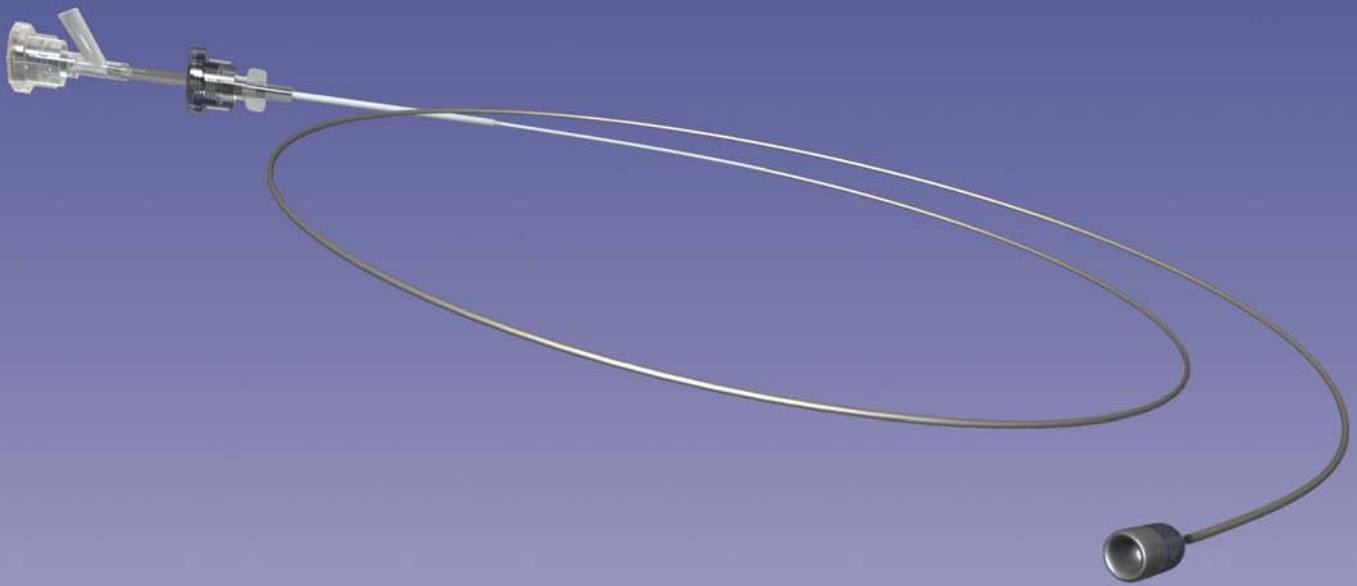


# *F.A.S.T.<sup>TM</sup> Funnel Catheter<sup>TM</sup>*

Proximal Occlusion Embolectomy/Thrombectomy System



An Elegantly Simple Solution

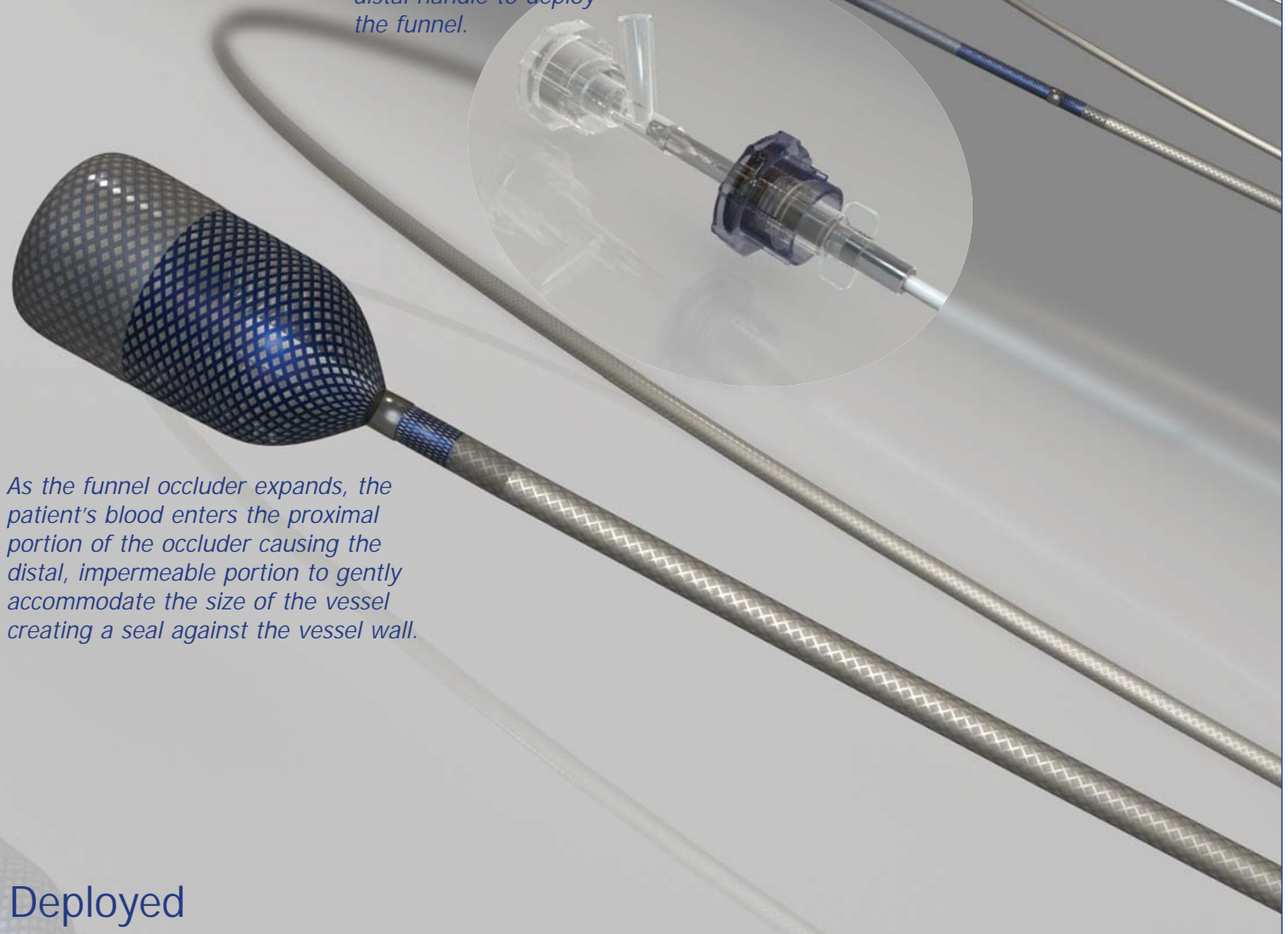


# F.A.S.T.<sup>™</sup> Funnel Catheter<sup>™</sup>

The new Genesis *F.A.S.T.<sup>™</sup> Funnel Catheter<sup>™</sup>* system is designed for simple and fast embolectomy and thrombectomy. *F.A.S.T.*'s unique vessel occlusion system allows for a "one size fits all" device that eliminates the complication inherent in other expanding occlusion devices.

Collapsed

*The proximal handle is pulled away from the distal handle to deploy the funnel.*



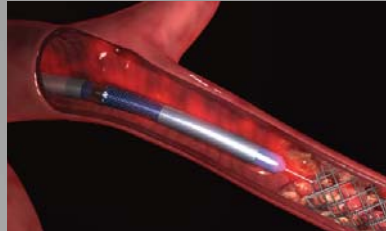
*As the funnel occluder expands, the patient's blood enters the proximal portion of the occluder causing the distal, impermeable portion to gently accommodate the size of the vessel creating a seal against the vessel wall.*

Deployed

Once in place, the *F.A.S.T.* funnel is deployed using an intuitive, **INSTANT ON/ INSTANT OFF** handle. Occlusion is achieved by a unique mechanism that harnesses native blood flow and uses it to provide sealing force. This mechanism minimizes the force against the intima, and eliminates the excessive outward radial force typically found in other expanding occlusion devices.

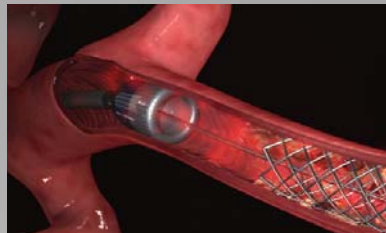
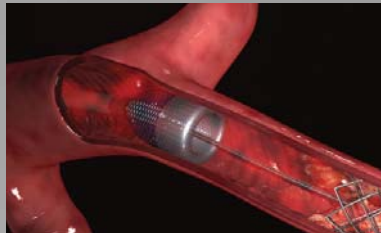
# F.A.S.T.™ Funnel Catheter™

## Procedures



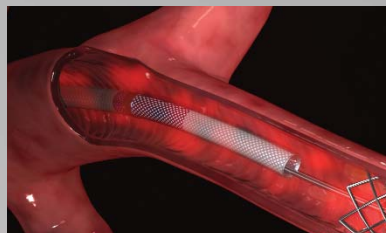
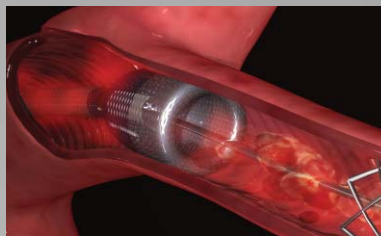
The *F.A.S.T.* is delivered over a guidewire and placed directly proximal to the target lesion.

The funnel occluder is deployed, arresting blood flow. Throughout the procedure, occlusion is directly controlled by instantly collapsing or deploying the funnel.



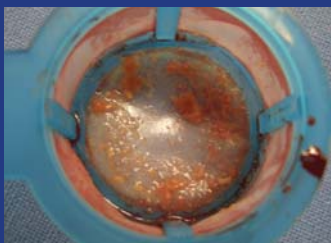
Blood flow in the vessel is arrested, preventing debris liberated during crossing of the lesion from being carried to the distal vasculature.

With the aid of a standard syringe, the thrombus and the stagnant blood column are removed using *Focused Aspiration*™.



At the end of the procedure, the funnel occluder is collapsed, restoring blood flow and the catheter is removed from the patient.

## Results



# F.A.S.T.™ Funnel Catheter™

Features	Benefits
<ul style="list-style-type: none"> <li>• <b>INSTANT ON/INSTANT OFF</b> Occlusion</li> </ul>	<ul style="list-style-type: none"> <li>• No delay achieving occlusion OR restoring blood flow</li> <li>• Easy to use by a single operator</li> <li>• Simple and quick</li> <li>• Enhanced patient safety and comfort</li> </ul>
<ul style="list-style-type: none"> <li>• Funnel Occluder</li> </ul>	<ul style="list-style-type: none"> <li>• Patient's blood pressure creates occlusion, minimizing force against vessel intima</li> <li>• Accommodates vessel sizes from 2mm to 5.5mm in diameter</li> <li>• <b>Focused Aspiration™</b> delivers maximum syringe vacuum to force thrombi and emboli through Big Mouth Funnel™</li> <li>• Funnel shape minimizes 'shadow zone' or 'crumb line' for more complete removal of debris</li> <li>• Excellent visualization with a small amount of contrast</li> <li>• Removes all sizes of emboli including humoral mediators</li> </ul>
<ul style="list-style-type: none"> <li>• Marker Bands</li> </ul>	<ul style="list-style-type: none"> <li>• Dual marker bands provide radiopacity for proper placement</li> </ul>
<ul style="list-style-type: none"> <li>• Rapid Exchange Obturator</li> </ul>	<ul style="list-style-type: none"> <li>• Fast delivery and deployment</li> <li>• Operator uses preferred .014" or .018" guidewire</li> </ul>



## Ordering Information

Case Pack Sterile, Single Use Only	Product P/N	OD	ID	Length	Sheath/Introducer Compatibility	Guide Catheter Compatibility	Guidewire Compatibility
4 each	FAST-6F-LVG	5.8F (.076")	4.1F (.054")	121cm	6F (.078" MIN ID)	7F (.078" MIN ID)	.014"/.018"

Genesis Medical Interventional, Inc.  
652 Bair Island Rd. Suite 103  
Redwood City, CA 94063  
Tel: 650.367.7667  
Fax: 650.367.7668

info@genesismedical.net  
www.genesismedical.net



Federal (USA) law restricts this device to sale by or on the order of a physician. **Indications and Contraindications:** The Genesis *F.A.S.T.™ Funnel Catheter™* is indicated for use as a temporary occlusion device, the non-surgical removal of emboli and thrombi, injection, and aspiration of fluids and for catheter placement over a guidewire into or from a vessel or graft. The *F.A.S.T.™ Funnel Catheter™* is a single use sterile disposable device. Do not Re-sterilize or re-use. The *F.A.S.T.™ Funnel Catheter™* device and procedure should be done only by a trained, licensed physician possessing adequate training in the use of the device e.g. participation in a Genesis training program. For complete details, refer to the current *The F.A.S.T.™ Funnel Catheter™* Directions for Use.

The Document is copyrighted with all rights reserved. Under copyright laws, it may not be copied in whole or in part or reproduced in any other media without the express written permission of Genesis Medical Interventional, Inc. Permitted copies must carry the same proprietary and copyright notices as were affixed to the original. Under the law, copying includes translation into another language.

Please note that while every effort has been made to ensure that the data given in this document is accurate, the information, figures, illustrations, tables, specifications, and schematics contained herein are subject to change without notice.

Genesis Medical Interventional, Inc.™, the Genesis Medical Interventional logo, *F.A.S.T.™*, *Focused Aspiration™* and *Funnel Catheter™* are trademarks of Genesis Medical Interventional, Inc.™

In addition, the *F.A.S.T.™ Funnel Catheter™* technology is protected by pending U.S. and International patent applications and by one or more of the following issued U.S. patents: 6,699,260, 6,695,858, 6,635,068, 6,602,265, 6,602,204, 6,530,923, 6,450,989, 6,409,742, 6,325,816, 6,258,115, 6,238,412, 6,221,006, 6,179,860, 6,758,855 and 7,011,654.